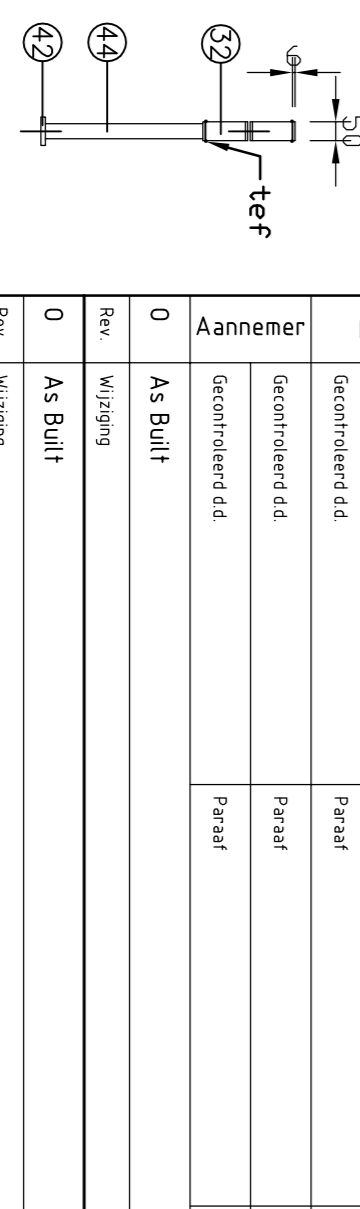
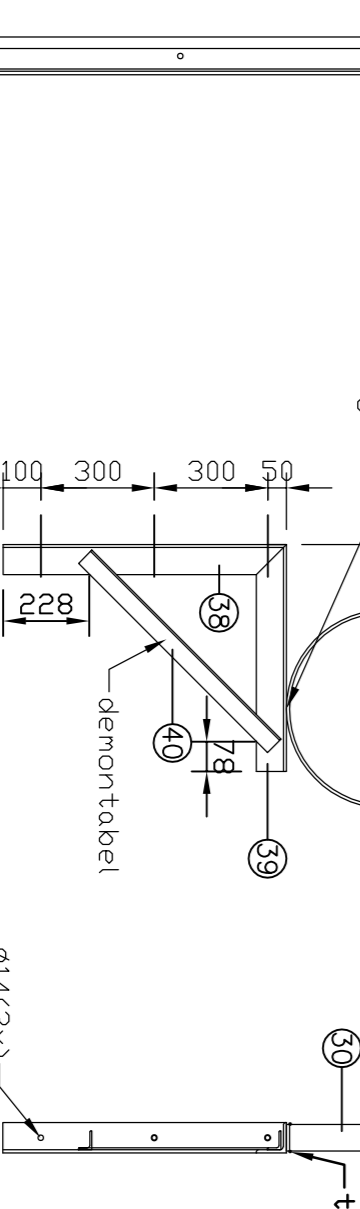
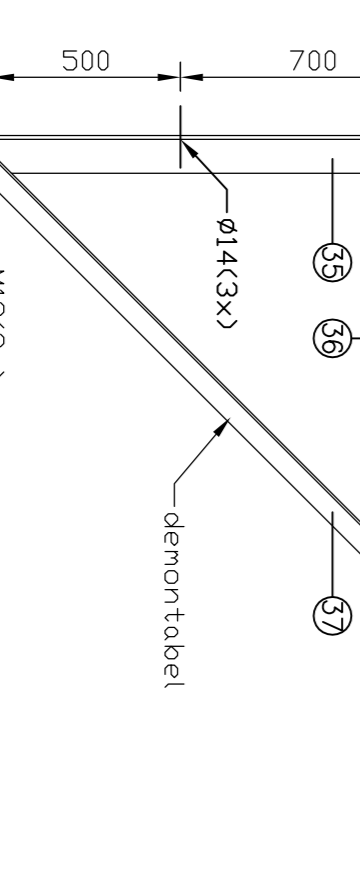
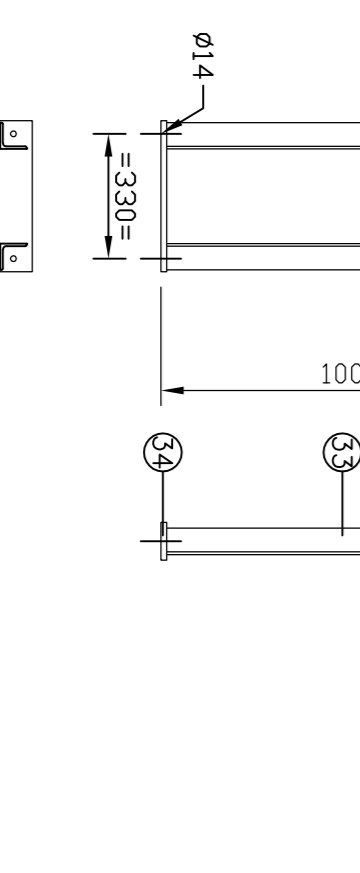
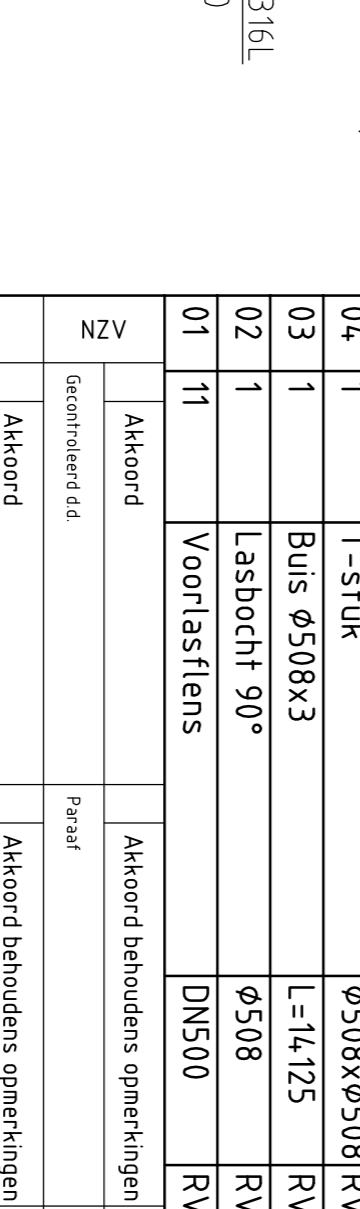
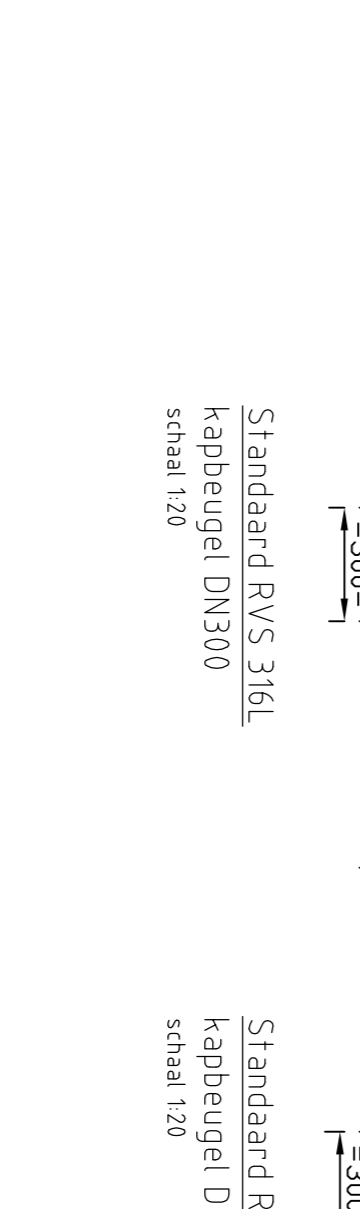
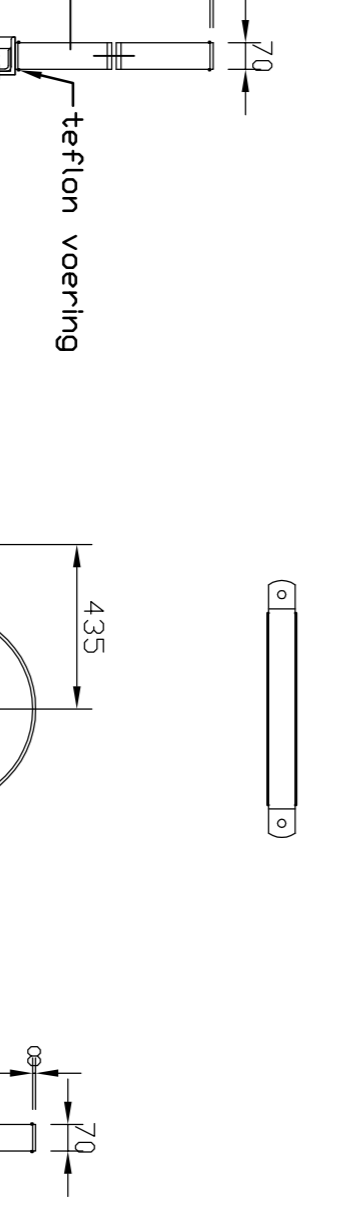
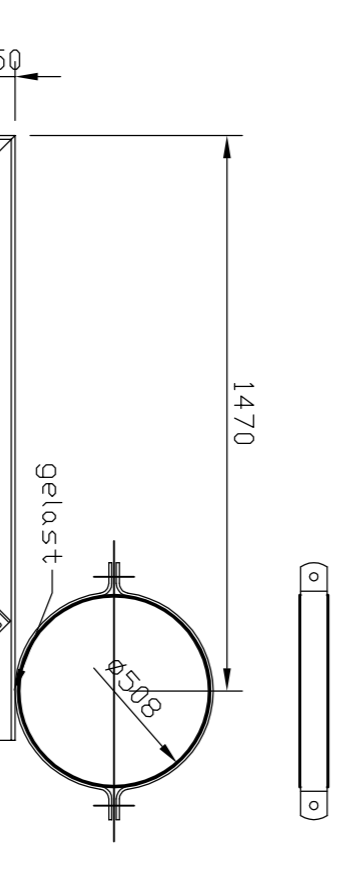
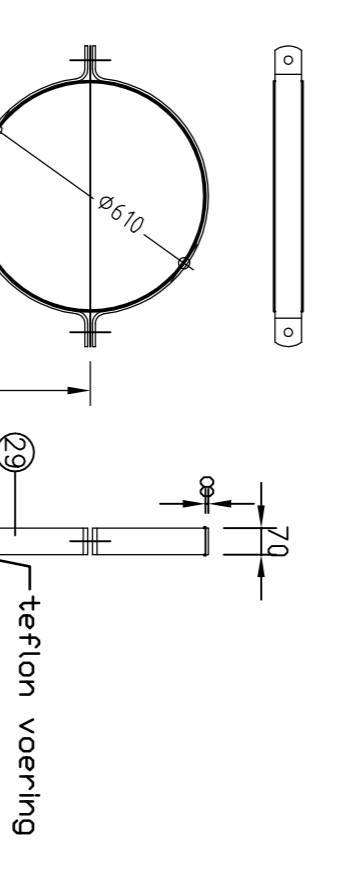
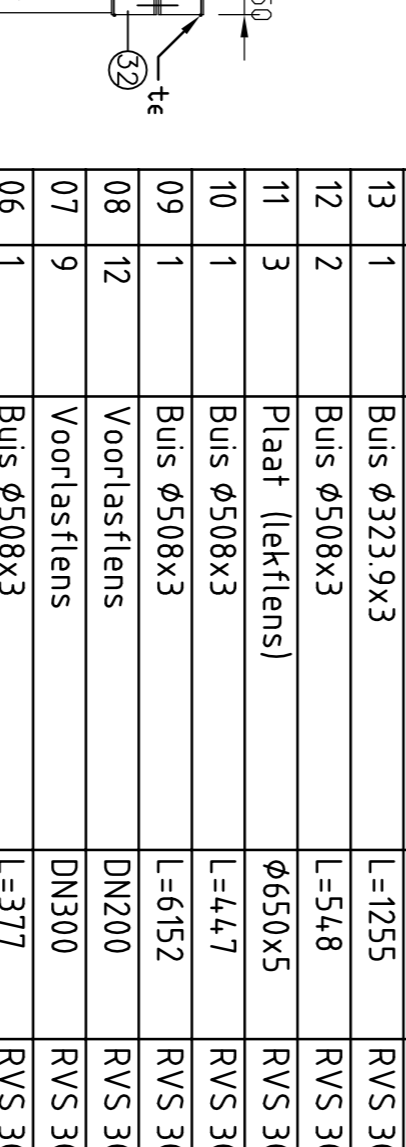
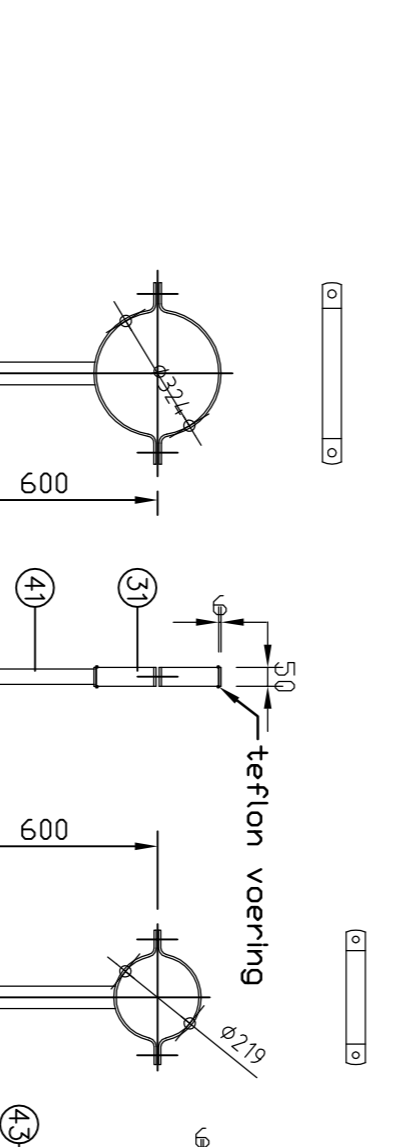
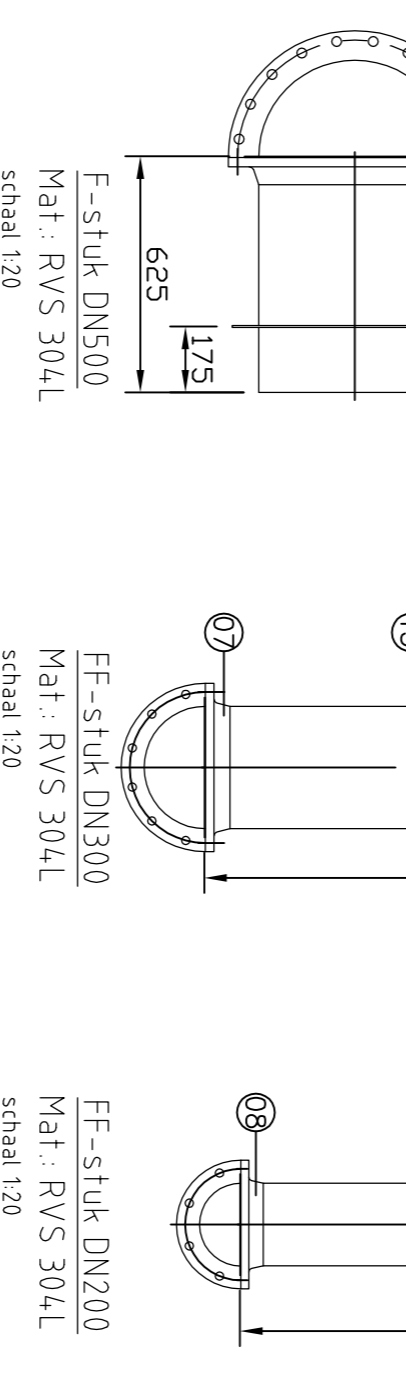
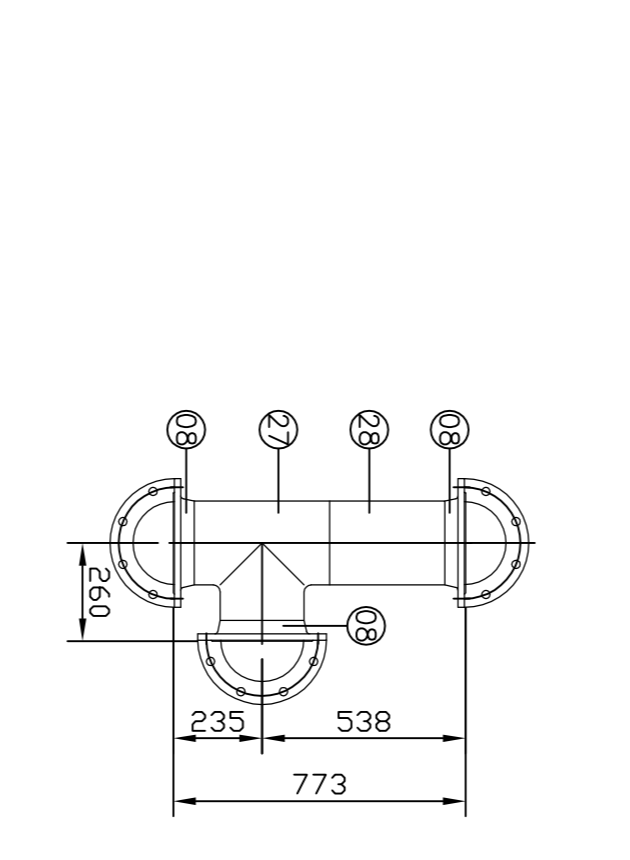
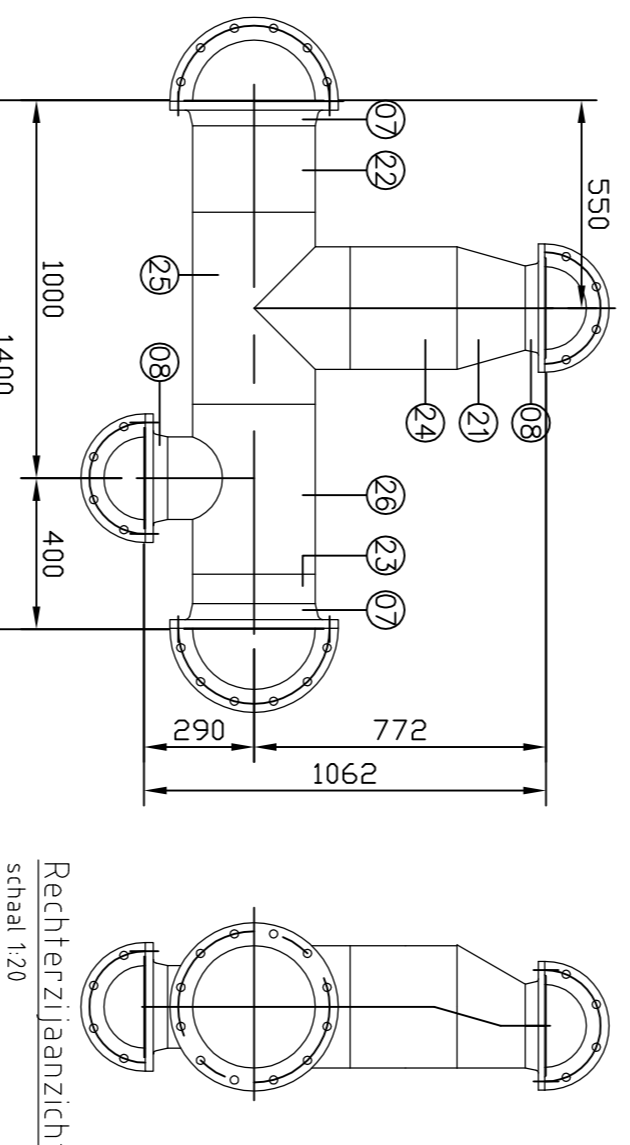
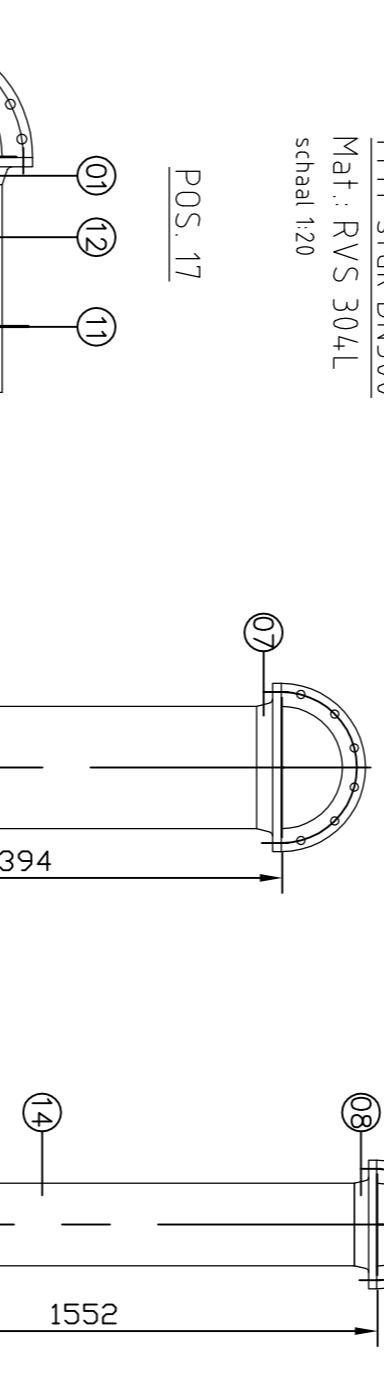
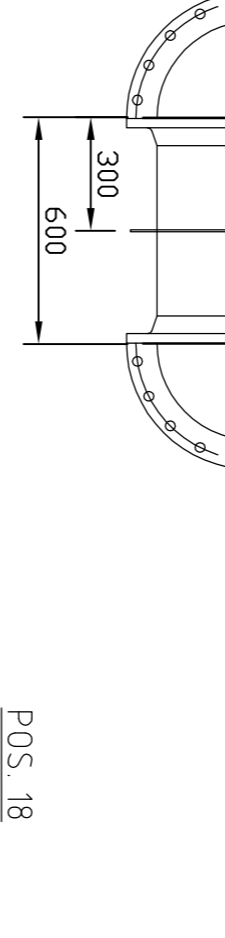
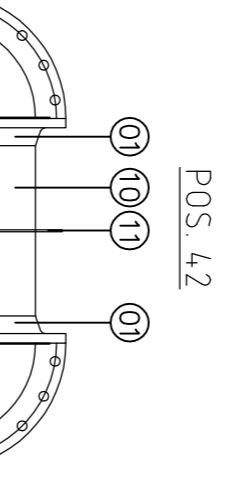
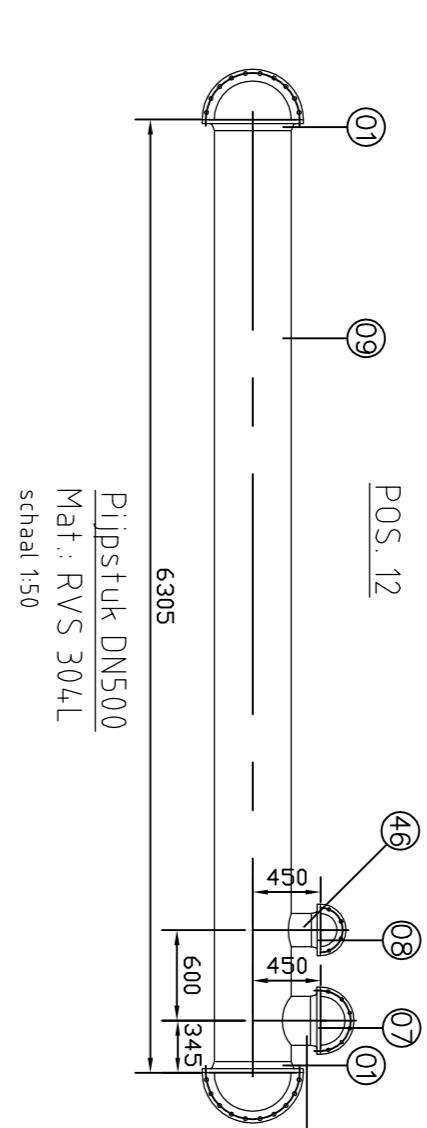
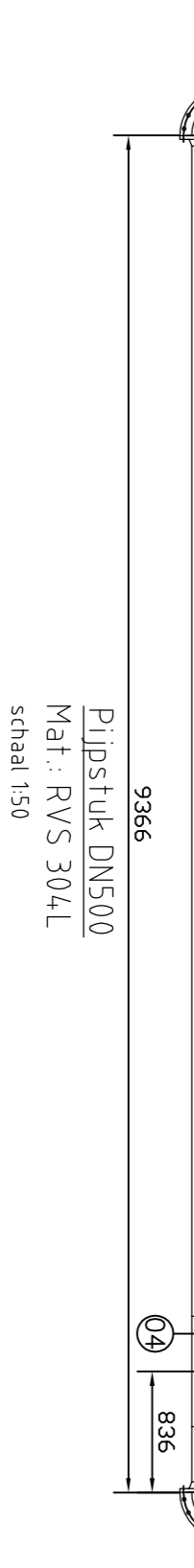
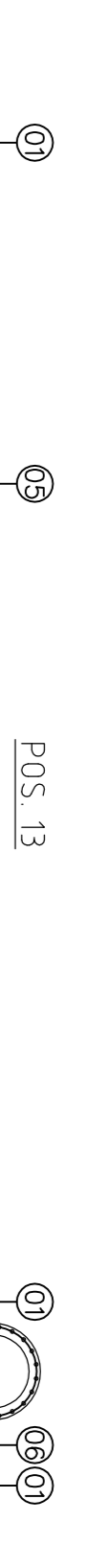


Opmerkingen:

- alle RVS-lussen voorzien van ca. 1,5 mm vooropening i.v.m. doorlassing
- RVS-leidingen zowel uit- als inwendig beitsen en passiveren
- Beugels en streunen beitsen en passiveren
- Met de beugels is rekening gehouden met stuurruimte van 50 mm
- scherpe kanten breken
- gelieve hulpstukken zoals bochten en T-stukken controleren op maatvoeringen voordat buizen op maat worden gezaagd



Standaard RVS 316L
Kapbeugel DN600
schaal 1:20

Standaard RVS 316L
Kapbeugel DN500
schaal 1:20

Standaard RVS 316L
Kapbeugel DN500
schaal 1:20

Standaard RVS 316L
Kapbeugel DN200
schaal 1:20

32	Stuifring	M12	RVS A2	DIN 126
16	Zeskantmoer	M12	RVS A2	DIN 934
16	Zeskantbout	M12x4,0	RVS A2	DIN 933
50	Chem. anker	M12x160	RVS A4	incl. capsuluss
46	Bus $\phi 219.1 \times 3$	L=150	RVS 304L	ASTM A312
45	Bus $\phi 323.9 \times 3$	L=185	RVS 304L	ASTM A312
44	Koker $60 \times 4 \times 3$	L=425	RVS 304	leiding DN200
43	Koker $60 \times 4 \times 3$	L=475	RVS 304	leiding DN200
42	Strip 75x12	L=400	RVS 304	leiding DN300
41	Koker $60 \times 4 \times 3$	L=420	RVS 304	leiding DN300
40	L80x50x5	L=705	RVS 304	leiding DN500
39	L80x80x8	L=600	RVS 304	leiding DN500
38	L80x80x8	L=750	RVS 304	leiding DN500
37	L60x60x6	L=800	RVS 304	leiding DN500
36	L100x100x10	L=1600	RVS 304	leiding DN500
35	L100x100x10	L=1500	RVS 304	leiding DN500
34	Strip 100x15	L=400	RVS 304	bv. GVK
33	L70x70x7	L=710	RVS 304	bv. GVK
32	Pijpbeugelsset	DN200	RVS 304	koopdeel
31	Pijpbeugelsset	DN300	RVS 304	koopdeel
30	Pijpbeugelsset	DN500	RVS 304	koopdeel
29	Pijpbeugelsset	DN600	RVS 304	koopdeel
28	Bus $\phi 219.1 \times 3$	L=302	RVS 304L	ASTM A312
27	T-stuk	219.1x219.1	RVS 304L	ASTM A312
26	T-stuk	323.9x219.1	RVS 304L	ASTM A312
25	T-stuk	323.9x323.9	RVS 304L	ASTM A312
24	Bus $\phi 323.9 \times 3$	L=280	RVS 304L	ASTM A312
23	Bus $\phi 323.9 \times 3$	L=75	RVS 304L	ASTM A312
22	Bus $\phi 323.9 \times 3$	L=225	RVS 304L	ASTM A312
21	Excentrisch verloop	323.9x219.1	RVS 304L	ASTM A312
20	Bus $\phi 323.9 \times 3$	L=114.50	RVS 304L	ASTM A312
19	Bus $\phi 323.9 \times 3$	L=128.56	RVS 304L	ASTM A312
18	Bus $\phi 219.1 \times 3$	L=83.53	RVS 304L	ASTM A312
17	Bus $\phi 219.1 \times 3$	L=700	RVS 304L	ASTM A312
16	Bus $\phi 219.1 \times 3$	L=77.15	RVS 304L	ASTM A312
15	Lasbocht 45°	$\phi 219.1$	RVS 304L	ASME B 16.9
14	Bus $\phi 219.1 \times 3$	L=14.25	RVS 304L	ASTM A312
13	Bus $\phi 508.3 \times 3$	L=5.48	RVS 304L	ASTM A312
12	Plaet (lektlens)	$\phi 650.5$	RVS 304L	ASTM A312
11	Bus $\phi 508.3 \times 3$	L=4.47	RVS 304L	ASTM A312
10	Bus $\phi 508.3 \times 3$	L=6.152	RVS 304L	ASTM A312
09	Voorlastflens	DN200	RVS 304L	PN 10
08	Voorlastflens	DN300	RVS 304L	PN 10
07	Bus $\phi 508.3 \times 3$	L=3.77	RVS 304L	ASTM A312
06	Bus $\phi 508.3 \times 3$	L=8.070	RVS 304L	ASTM A312
05	T-stuk	$\phi 508.3 \times \phi 508$	RVS 304L	ASME B 16.9
03	Bus $\phi 508.3 \times 3$	L=14.125	RVS 304L	ASTM A312
02	Lasbocht 90°	$\phi 508$	RVS 304L	ASME B 16.9
01	Voorlastflens	DN500	RVS 304L	PN 10

Waterschap Noord-Brabant
 Afdeling Project & Advies
 Postbus 18
 5000 AA Tilburg
 T: 0165 - 301.90.11
 F: 0165 - 301.90.66
 e: info@waterschap-nb.nl